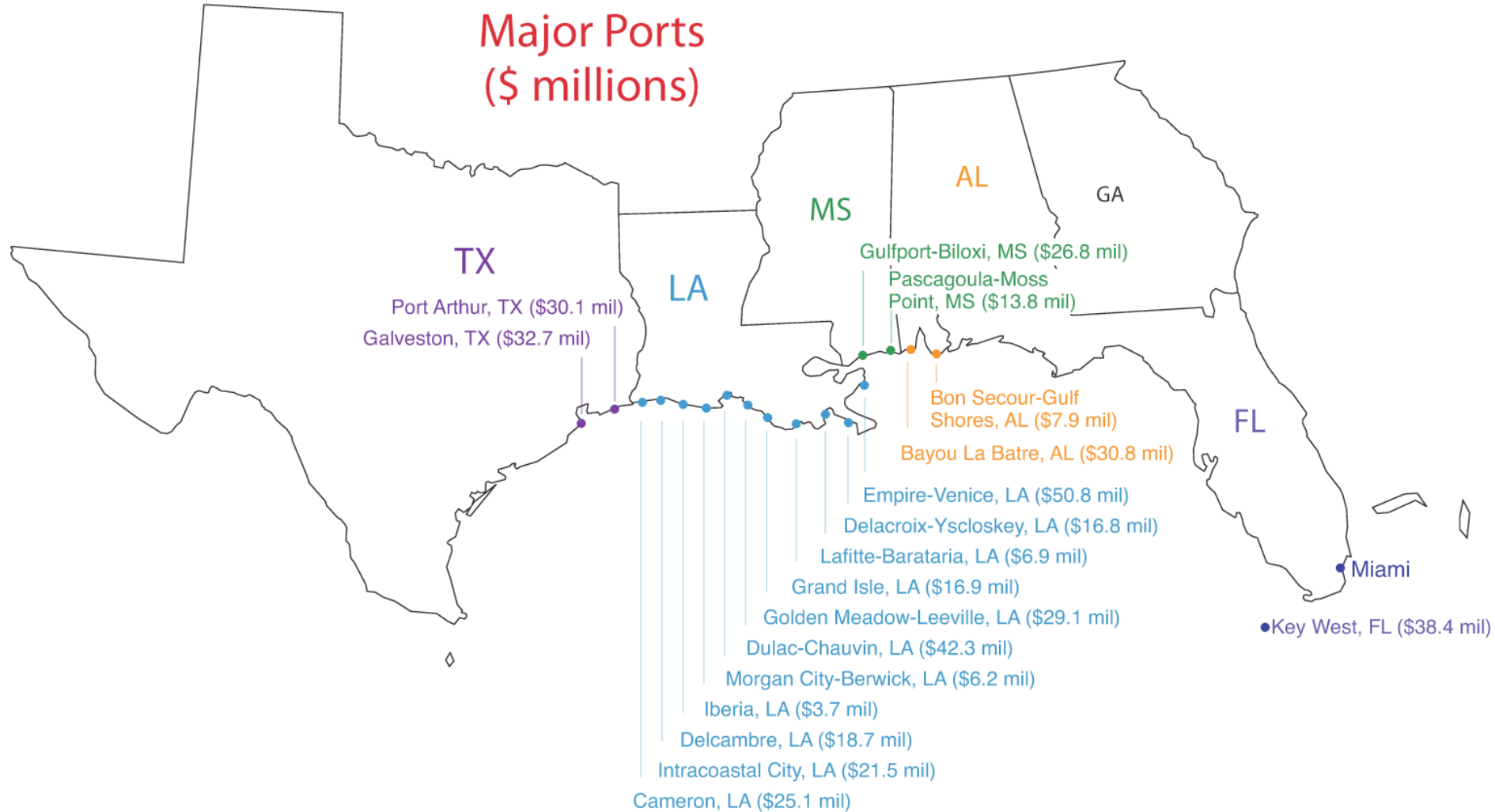


Major Fishing Ports:

NOAA Fisheries Service

Presentation Updated: September 28, 2005

Gulf of Mexico Major Ports (\$ millions)



2004 Gulf of Mexico Commercial Fishing Revenue

--- Preliminary Data ---

	Alabama	Louisiana	Mississippi	W. Florida	SE Texas
Oyster	2,120,392	34,775,087	6,073,242	2,877,957	13,157,120
Shrimp	29,192,482	139,157,576	26,524,987	32,927,976	57,973,840
Finfish & Other Shellfish	5,722,923	118,775,448	11,192,325	110,055,421	5,733,349
Annual Total	37,035,797	292,708,111	43,790,554	145,861,354	75,864,309

Regional Total: \$595,260,125

2004 Gulf of Mexico Commercial Fishing Revenue by Month

--- Preliminary Data ---

		January	February	March	April	May	June	July	August	September	October	November	December
Alabama	Oyster	201,550	102,558	282,957	201,044	230,393	152,960	176,861	197,091	152,566	225,851	180,626	15,935
	Shrimp	809,506	702,206	715,176	627,658	1,767,400	4,270,094	2,527,724	6,400,402	3,279,475	4,080,943	2,027,888	1,984,010
	Finfish & Oth	307,979	218,174	321,511	624,361	591,633	583,528	755,398	697,227	347,079	384,220	647,427	244,386
	<i>Sub-total</i>	1,319,035	1,022,938	1,319,644	1,453,063	2,589,426	5,006,582	3,459,983	7,294,720	3,779,120	4,691,014	2,855,941	2,244,331
Mississippi	Oyster	975,940	158,368	599,942	866,138	0	0	0	0	130,104	1,044,095	1,369,729	928,926
	Shrimp	678,385	51,616	49,884	84,112	2,871,430	5,252,422	2,552,525	4,441,310	2,310,338	3,151,299	3,022,828	2,058,838
	Finfish & Oth	148,437	136,408	147,024	621,888	1,314,935	2,012,361	2,221,180	2,102,599	1,006,372	1,241,577	120,320	119,224
	<i>Sub-total</i>	1,802,762	346,392	796,850	1,572,138	4,186,365	7,264,783	4,773,705	6,543,909	3,446,814	5,436,971	4,512,877	3,106,988
Louisiana	Oyster	1,386,645	2,176,597	3,519,973	2,400,720	3,931,793	3,610,802	3,019,639	2,874,034	2,259,860	3,777,287	2,856,707	2,961,030
	Shrimp	2,299,692	695,770	1,017,780	2,373,588	19,418,082	16,652,921	10,669,411	24,396,393	13,527,482	23,007,250	17,411,456	7,687,751
	Finfish & Oth	3,513,188	3,658,991	4,898,907	7,500,189	15,311,624	14,179,924	19,628,727	16,893,327	12,375,357	10,975,685	5,982,953	3,856,576
	<i>Sub-total</i>	7,199,525	6,531,358	9,436,660	12,274,497	38,661,499	34,443,647	33,317,777	44,163,754	28,162,699	37,760,222	26,251,116	14,505,357
West	Oyster	288,687	239,835	287,321	225,552	209,907	179,610	220,792	107,525	57,949	301,926	375,773	383,080
Florida	Shrimp	2,692,404	2,112,239	3,389,630	2,558,276	3,488,014	3,455,649	2,082,692	1,208,362	977,135	2,457,287	3,884,699	4,621,589
	Finfish & Oth	9,640,204	8,124,454	8,119,810	8,127,148	7,278,885	6,219,772	5,266,683	12,455,524	8,289,432	13,925,037	13,476,863	9,131,609
	<i>Sub-total</i>	12,621,295	10,476,528	11,796,761	10,910,976	10,976,806	9,855,031	7,570,167	13,771,411	9,324,516	16,684,250	17,737,335	14,136,278
SE Texas	Oyster	1,720,715	1,218,918	1,359,274	1,175,441	837,228	560,162	722,543	693,744	300,269	721,241	2,514,425	1,333,160
	Shrimp	942,976	456,803	1,206,450	2,541,558	3,952,977	6,198,805	7,860,334	11,700,851	6,637,322	7,101,947	6,756,227	2,617,590
	Finfish & Oth	105,983	391,991	525,447	645,498	496,875	407,287	442,676	386,012	106,158	420,515	393,065	411,842
	<i>Sub-total</i>	2,769,674	2,067,712	3,091,171	4,362,497	5,287,080	7,166,254	9,025,553	12,780,607	7,043,749	8,243,703	9,663,717	4,362,592
All States Monthly Total		22,942,617	18,377,216	23,349,915	26,210,674	56,414,096	56,570,043	49,121,632	71,773,794	44,713,149	64,572,457	51,357,269	33,992,954

Source: NMFS SEFSC 2004; Texas includes Galveston, Harris, Chambers & Jefferson Counties only

Potential Katrina & Rita Commercial Fishing Impacts

Alabama/Mississippi/Louisiana/Florida/Texas

- - - Preliminary Data - - -

- Federally permitted fishing vessels

	Total	Shrimp Permits
– Alabama	432	196
– Florida	3,738	364
– Louisiana	1,033	757
– Mississippi	351	256
– Texas	1,119	821

Source: NMFS Southeast Region

Note: Numbers are estimates.
Some duplication between federal and state permits.

- State permitted fishing vessels

– Alabama	1,300
– Florida	4,376
– Louisiana	7,400
– Mississippi	750
– Texas	N/A

Note: Number of shrimp vessels not known. Each state handles permitting differently. Louisiana permits shrimp nets.

- Seafood Processors

– Alabama	64
– Louisiana	81
– Mississippi	32
– Texas	24

Source: NMFS Processed Products Report

Potential Katrina & Rita Recreational Fishing Impacts Alabama/Mississippi/Louisiana/Florida/Texas

--- Preliminary Data ---

- Hurricanes Katrina & Rita impacted recreational fishing from Florida panhandle through Texas; Katrina also impacted southern Florida including the Keys.
 - Alabama, Mississippi, Louisiana are most affected
- Estimated 3,077 charter/headboats in Alabama, Mississippi, Louisiana, West Coast Florida & Texas

State	Charter/Headboats
Alabama	191
Mississippi	74
Louisiana	532
West Coast Florida	1,322
Texas	958

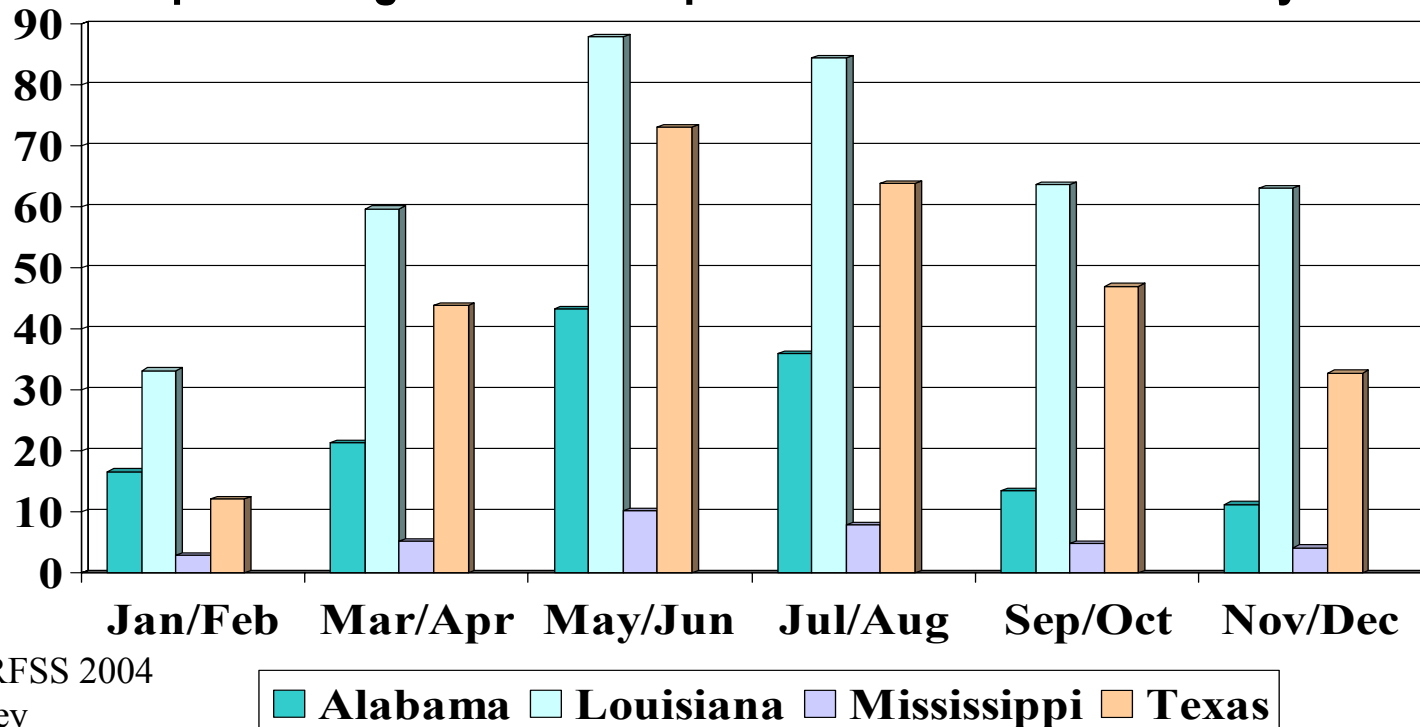
Source: 2005 NMFS
MRFSS data

2004 Gulf of Mexico Sportfishing

- - - Preliminary Data - - -

Alabama		Louisiana		Mississippi		Texas	
Total Trips	2.1 mil	Total Trips	4.8 mil.	Total Trips	1.1 mil	Total Trips	1.1 mil
Charter Trips	72,000	Charter Trips	134,000	Charter Trips	12,300	Charter Trips	155,021
Annual Economic Impacts	\$142M	Annual Economic Impacts	\$392M	Annual Economic Impacts	\$35.6M	Annual Economic Impacts	\$273M

2004 Sportfishing Economic Impacts in the Gulf of Mexico by Wave



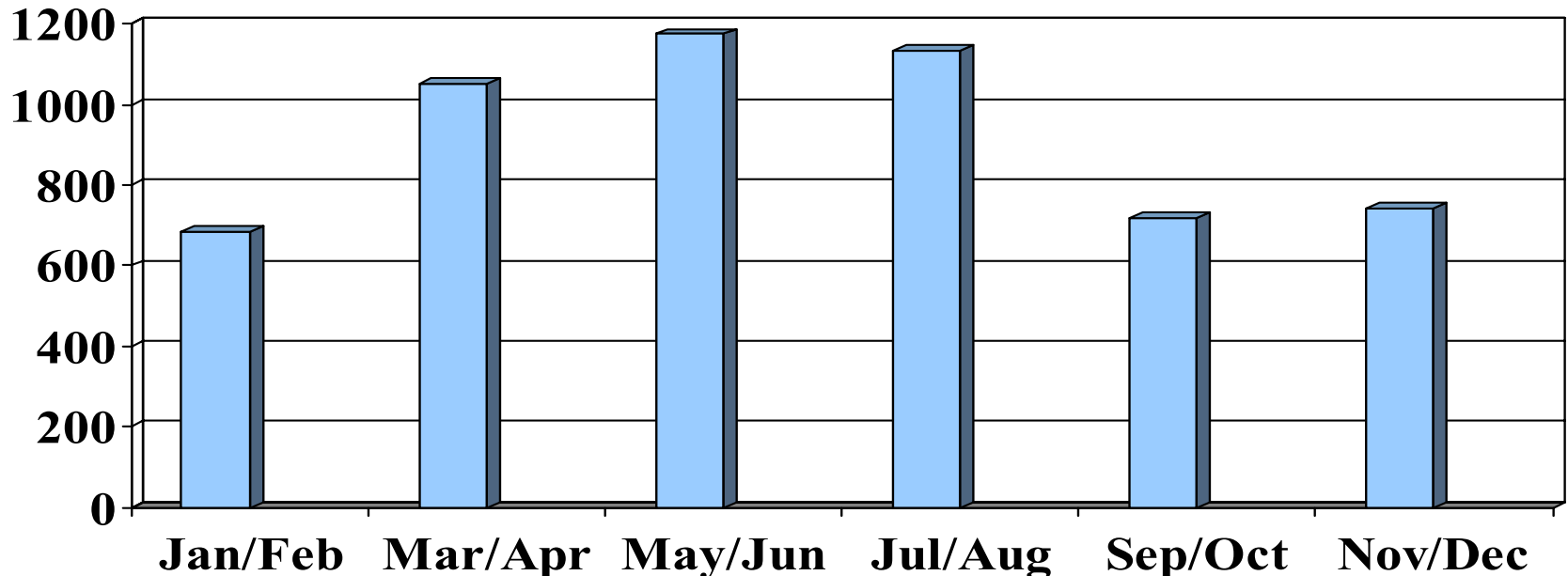
2003 Texas data provided by TX Dept of Fish & Game; excludes shore fishing

2004 West Florida Sportfishing

- - - Preliminary Data - - -

West Florida	
Total Trips	16.6 mil.
Charter Trips	564,000
Annual Economic Impacts	\$5,506M

2004 Sportfishing Economic Impacts in West Florida by Wave



Preliminary Data

Katrina Commercial/Recreational Fishing Impacts

Louisiana

Estimates of fishery losses caused by Hurricane Katrina:

Category	Direct Loss of Available Resource	12 Month Potential Production Loss at Dockside	12 Month Potential Production Losses at Retail Level
Crab		\$12,297,617	\$81,776,427
Fresh water Fish		\$189,019	\$1,256,934
Menhaden		\$14,050,883	\$93,435,257
Oysters	\$206,811,000	\$44,577,072	\$296,427,648
Saltwater Fish		\$11,836,588	\$78,710,687
Shrimp		\$81,054,864	\$538,996,879
Recreational Fisheries		N/A	\$199,517,744
Total	206,811,000	\$164,006,043	\$1,290,121,576

NOTE: Oyster losses are for two (2) years.

Alabama

Estimates of fishery losses caused by Hurricane Katrina greater than \$200,000,000.

Information provided by: Louisiana Department of Fisheries and Wildlife

Alabama Department of Conservation and Natural Resources

Preliminary Data

Mississippi's Potential Harvesting, Processing and Distribution Impacts

Preliminary estimate for losses from Hurricane Katrina is approximately \$7.5 million excluding vessels and vehicles—Mississippi State Action Plan Estimate 2005

Potential Impacts on Harvesting, Processing and Distribution (Posadas, 2000)

	Output		Employment		Labor Income		Indirect Taxes	
	\$M	Percent	Jobs	Percent	\$M	Percent	\$M	Percent
<i>Economic Impact by species:</i>								
Shrimp	436.66	67%	5,853	64%	82.51	64%	17%	64%
Oysters	34.13	5%	511	6%	7.17	6%	1.50	6%
Crabs	5.07	1%	88	1%	1.22	1%	0.26	1%
Foodfish	45.84	7%	376	4%	5.43	4%	1.07	4%
<i>Economic impact by groups:</i>								
Edible species	521.71	80%	6,826	74%	96.33	75%	19.96	74%
All Edible	654.29	100%	9,172	100%	129.08	100%	26.88	100%

Source: Posadas, B.C. (2000) Economic Impact of Mississippi Seafood Harvesting, Processing, and Distribution: 1991, 1994, 1997. Mississippi State University Coastal Research and Extension Center. Biloxi Mississippi.